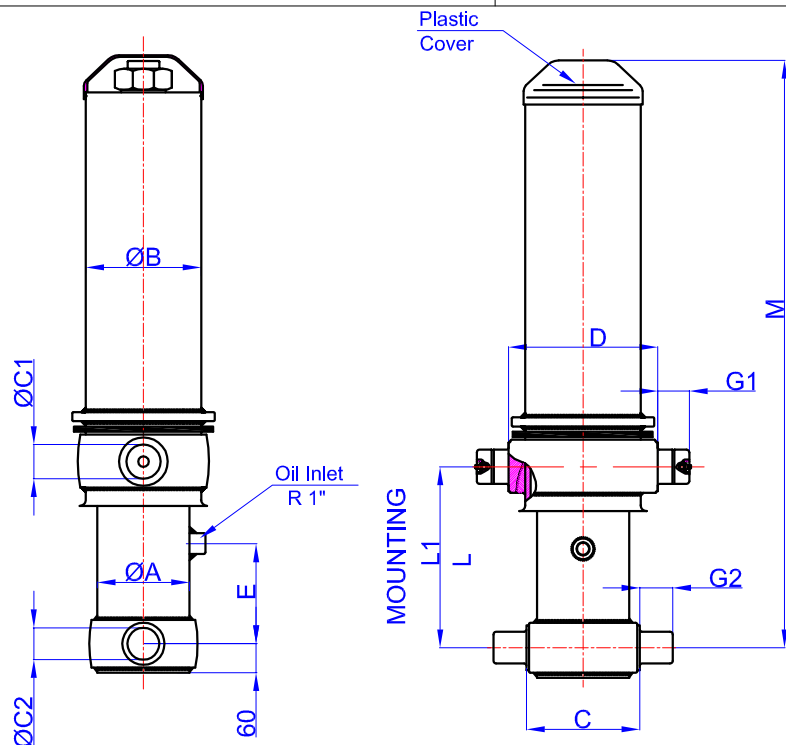


**GHS 175 x 5 x 5750 H**

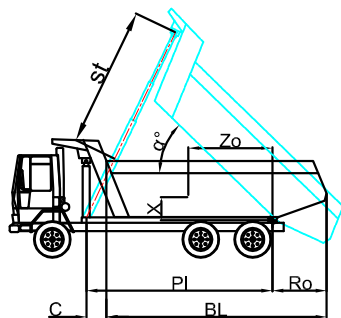
**Stock Code : 43175557506**  
**Reference No : 01-001**



- A : 197 mm
- B : 245 mm
- C : 240 mm
- C1 : 65 mm
- C2 : 60 mm
- D : 340 mm
- E : 190 mm
- G1 : 60 mm
- G2 : 60 mm
- L : 343 mm
- \*L1 : 373 mm
- M : 1485 mm

\* Inc 30 mm pull out :  
 tolerance +20 -0  
 Hard Chromed all stages  
 Working Pressure : 170 Bar  
 Max. Working Pressure : 190 Bar

STAGE	1	2	3	4	5	6	7	8	TOTAL
EFFECTIVE DIAMETER (mm)	Ø175	Ø154,5	Ø135	Ø116	Ø98				
STROKE	1150	1150	1150	1150	1150				5750
OIL DISPLACEMENT (L)	29	23	17,5	13	9,5				100
THRUST AT 170 BAR (TONS)	40	31	24	18	12				



BL (body length)	7300			7100			6900		
Ro (rear overhang)	200	500	800	200	500	800	200	500	800
α°	45	47	49	46	49	51	47	50	53
Ycog (vert. pos. centre of gravity)									
PI (Pivot length)									
α° = st x 60 / PI									
st	5475	5483	5471	5443	5553	5525	5405	5500	5565

Weight : --- Kg

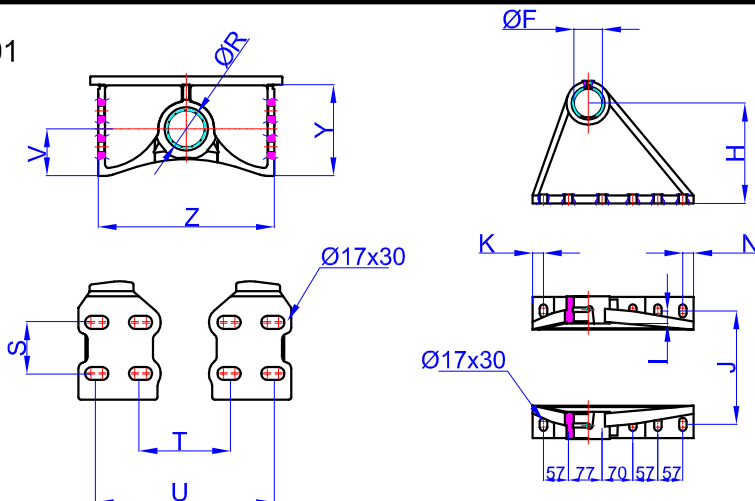
Drawing No : 43175557506-01-001

Bracket : 47000024-0001

- R : 60,8 mm
- S : 70 mm
- T : 219 mm
- U : 339 mm
- V : 80 mm
- Y : 152 mm
- Z : 368 mm

\* Bracket are optional

Weight : 16,5 Kg



**GHLB 65-229 HM PLUS**  
**: 47000121-0001**

- F : 65,8 mm
- H : 229 mm
- I : 28,5 mm
- J : 400 mm
- K : 25 mm
- N : 25 mm
- O : -- mm
- P : -- mm

\* Bracket are optional