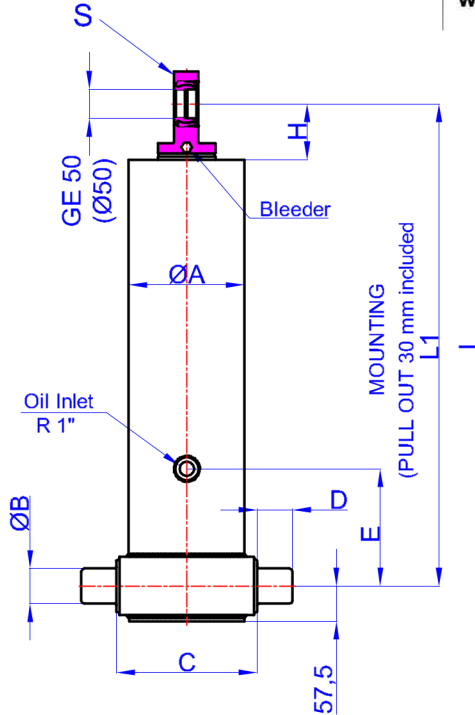


GHS 155 x 4 x 4780 C

Гр. София, ул. Челопешко шосе 10-12

0886 441 442 / 0898 447 449

www.hydraulicstore.eu



A	:	175	mm
B	:	60	mm
C	:	215	mm
D	:	60	mm
E	:	350	mm
H	:	95	mm
L	:	1500	mm
*L1	:	1530	mm
S	:	42	mm

* Inc 30 mm pull out :
tolerance +20 -0

Hard Chromed all stages

Working Pressure : 170 Bar
Max. Working Pressure : 190 Bar

All Cylinder Materials are St
52 Cold Drawn Tubes

STAGE	1	2	3	4	5	6	7	8	TOTAL
EFFECTIVE DIAMETER (mm)	Ø154,5	Ø135	Ø116	Ø98					
STROKE	1195	1195	1195	1195					4780
OIL DISPLACEMENT (L)	24	18,5	13,5	10					74
THRUST AT 170 BAR (TONS)	31	24	18	12					

BL (body length)

Ro (rear overhang)

Ycog (vert. pos. centre of gravity)

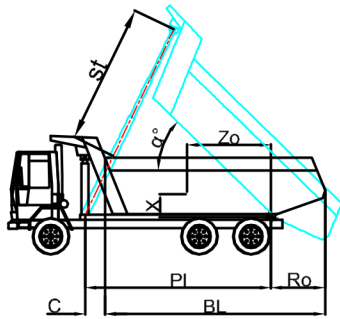
PI (Pivot length)

$\alpha^\circ = \frac{st \times 60}{PI}$

BL	6100			5900			5700		
Ro	200	500	800	200	500	800	200	500	800
α°	45	48	50	47	49	53	49	52	55
Ycog									
600	34	38	44	35	39	46	36	41	49
900	37	43	51	39	45	55	40	50	60
1200	41	49	60	43	52	65	46	56	68
st	4575	4640	4583	4221	4573	4681	4655	4680	4675

Weight : 190 Kg

Drawing No : 43155447803-02-001

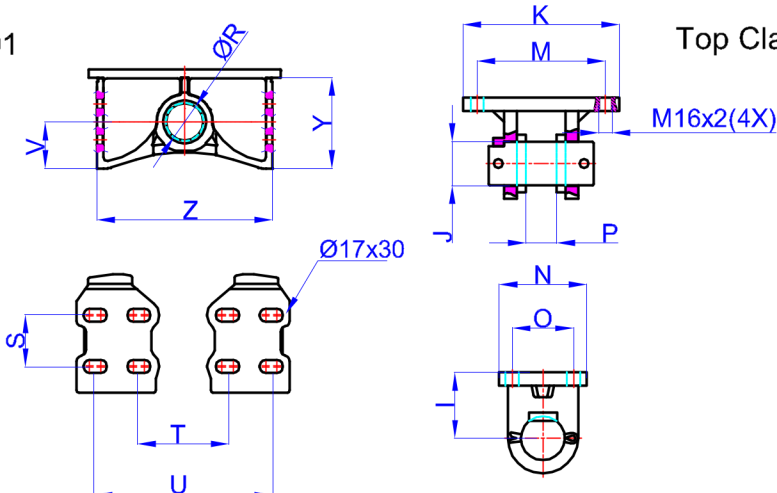


Bracket : 47000024-0001

R	:	60,8	mm
S	:	70	mm
T	:	195	mm
U	:	315	mm
V	:	80	mm
Y	:	152	mm
Z	:	368	mm

* Bracket are optional

Weight : 16,5 Kg



Top Clavis : 47000026-02-002

L	:	85	mm
J	:	50	mm
K	:	216	mm
M	:	184	mm
N	:	125	mm
O	:	95	mm
P	:	39	mm

* Bracket are optional