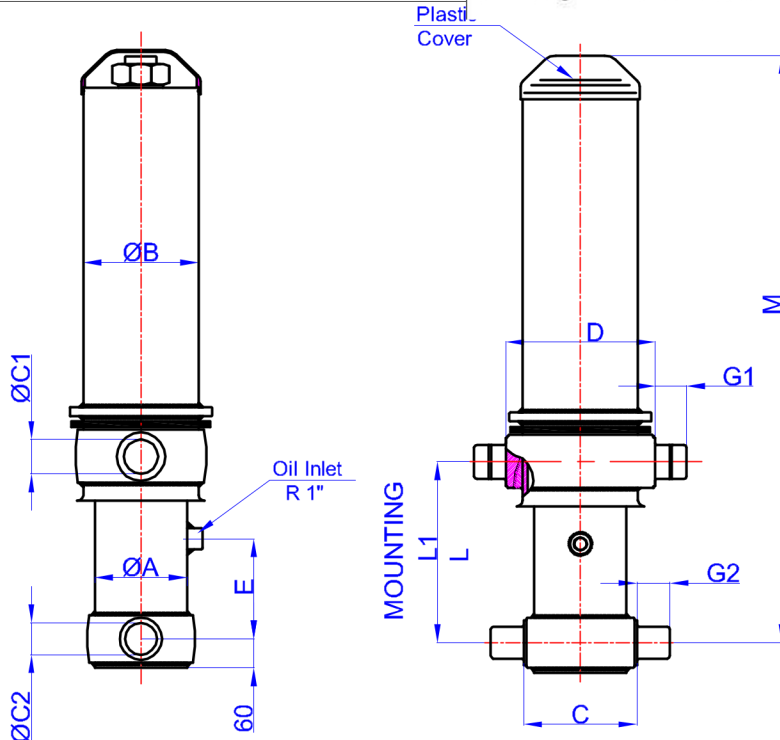


GHS 175 x 5 x 7325 H

Гр. София, ул. Челопешко шосе 10-12

0886 441 442 / 0898 447 449

www.hydraulicstore.eu



- A : 197 mm
- B : 242 mm
- C : 240 mm
- C1 : 65 mm
- C2 : 60 mm
- D : 340 mm
- E : 190 mm
- G1 : 60 mm
- G2 : 60 mm
- L : 343 mm
- *L1 : 373 mm
- M : 1835 mm

* Inc 30 mm pull out : tolerance +20 -0

Hard Chromed all stages

Working Pressure : 170 Bar

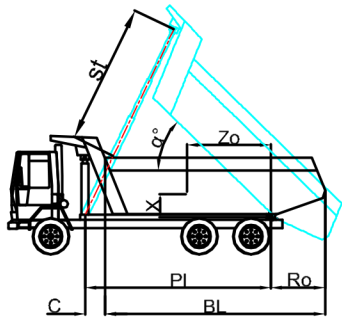
Max. Working Pressure : 190 Bar

STAGE	1	2	3	4	5	6	7	8	TOTAL
EFFECTIVE DIAMETER (mm)	Ø175	Ø154,5	Ø135	Ø116	Ø98				
STROKE	1465	1465	1465	1465	1465				7325
OIL DISPLACEMENT (L)	36,5	28,5	22	16	12				115
THRUST AT 170 BAR (TONS)	40	31	24	18	12				

BL (body length)	9400			9200			9000		
Ro (rear overhang)	200	500	800	200	500	800	200	500	800
α°	45	46	48	46	47	49	47	49	50
Ycog (vert. pos. centre of gravity)									
600	33	35	38	33	36	38	34	37	39
900	35	37	40	36	38	42	36	39	43
1200	37	40	44	38	41	46	39	42	48
st	7050	6976	7040	7053	6971	7023	7050	7105	7000

Weight : --- Kg

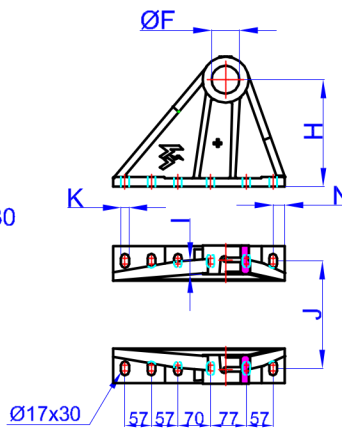
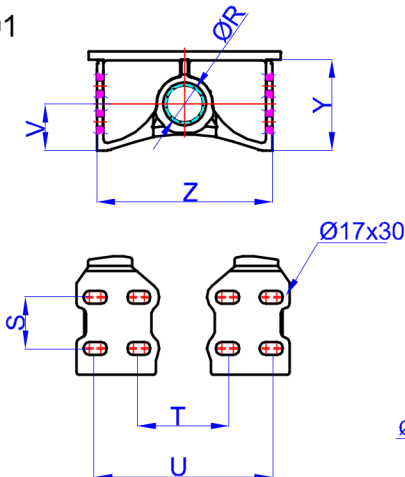
Drawing No : 43175573256-01-001



Bracket : 47000024-0001

GHLB : 47000121-0001

- R : 60,8 mm
- S : 70 mm
- T : 220 mm
- U : 340 mm
- V : 80 mm
- Y : 152 mm
- Z : 368 mm



- F : 65,5 mm
- H : 229 mm
- I : 28,5 mm
- J : 400 mm
- K : 17 mm
- N : 25 mm
- O : -- mm
- P : -- mm

* Bracket are optional

Weight : 16,5 Kg

* Bracket are optional