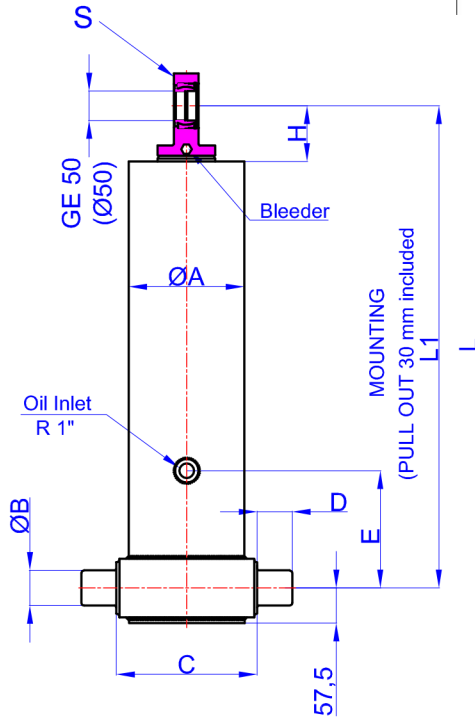


GHS 155 x 4 x 4100 C

Гр. София, ул. Челопешко шосе 10-12

0886 441 442 / 0898 447 449

www.hydraulicstore.eu



A	:	175	mm
B	:	60	mm
C	:	215	mm
D	:	60	mm
E	:	350	mm
H	:	95	mm
L	:	1310	mm
*L1	:	1340	mm
S	:	42	mm

* Inc 30 mm pull out :
tolerance +20 -0

Hard Chromed all stages

Working Pressure : 170 Bar
Max. Working Pressure : 190 Bar

All Cylinder Materials are St
52 Cold Drawn Tubes

STAGE	1	2	3	4	5	6	7	8	TOTAL
EFFECTIVE DIAMETER (mm)	Ø154,5	Ø135	Ø116	Ø98					
STROKE	1025	1025	1025	1025					4100
OIL DISPLACEMENT (L)	20,5	15,5	11,5	8,5					63
THRUST AT 170 BAR (TONS)	31	24	18	12					

BL (body length)

Ro (rear overhang)

Ycog (vert. pos. centre of gravity)

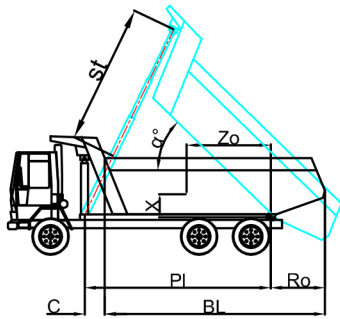
PI (Pivot length)

$\alpha^\circ = \frac{st \times 60}{PI}$

	5200	5000	4800
BL	5200	5000	4800
Ro	200	500	800
α°	45	48	52
Ycog	36	41	50
600	40	48	62
900	46	58	72
1200	3900	3838	3910
st	3833	3958	3886
	3920	3900	3920

Weight : 168 Kg

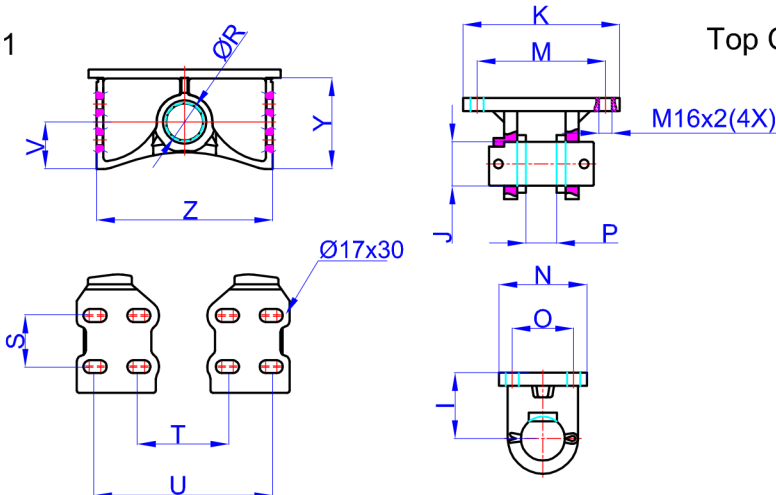
Drawing No : 43155441003-02-001



Bracket : 47000017-0001

Top Clavis : 47000026-0001

R	:	60,8	mm
S	:	70	mm
T	:	192	mm
U	:	312	mm
V	:	76	mm
Y	:	148	mm
Z	:	286	mm



I	:	85	mm
J	:	50	mm
K	:	216	mm
M	:	184	mm
N	:	125	mm
O	:	95	mm
P	:	39	mm

* Bracket are optional

* Bracket are optional

Weight : 9,5 Kg