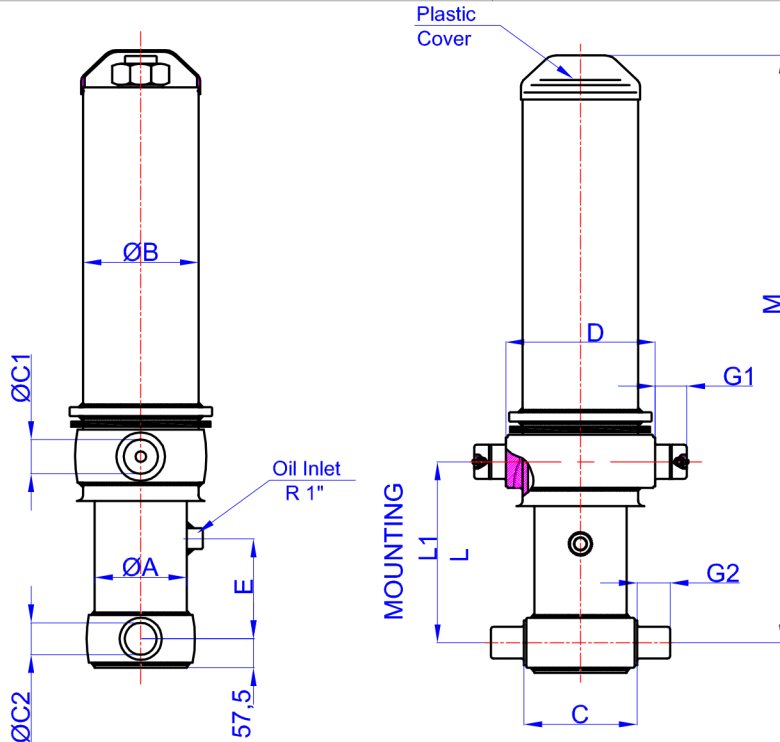


GHS 155 x 4 x 4440 H

Stock Code : 43155444406
Reference No : 01-001



- A : 175 mm
- B : 242 mm
- C : 215 mm
- C1 : 65 mm
- C2 : 60 mm
- D : 340 mm
- E : 190 mm
- G1 : 60 mm
- G2 : 60 mm
- L : 343 mm
- *L1 : 373 mm
- M : 1440 mm

* Inc 30 mm pull out :
tolerance +20 -0

Hard Chromed all stages

Working Pressure : 170 Bar

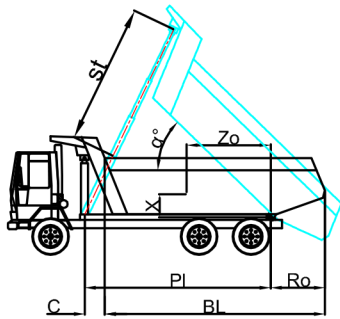
Max. Working Pressure : 190 Bar

STAGE	1	2	3	4	5	6	7	8	TOTAL
EFFECTIVE DIAMETER (mm)	Ø154,5	Ø135	Ø116	Ø98					
STROKE	1110	1110	1110	1110					4440
OIL DISPLACEMENT (L)	22,5	17	12,5	9					68,5
THRUST AT 170 BAR (TONS)	31	24	18	12					

	BL	5600		5400		5200		
BL (body length)	BL	5600		5400		5200		
Ro (rear overhang)	Ro	200	500	800	200	500	800	200
α°	α°	45	48	51	46	47	50	49
Ycog (vert. pos. centre of gravity)	Ycog	36	41	48	37	37	43	38
PI (Pivot length)	PI	900	39	47	58	41	41	50
α° = st x 60 / PI	α°	1200	44	54	68	47	47	59
	st	4200	4240	4250	4140	3995	4000	4246
								4246
								4293

Weight : --- Kg

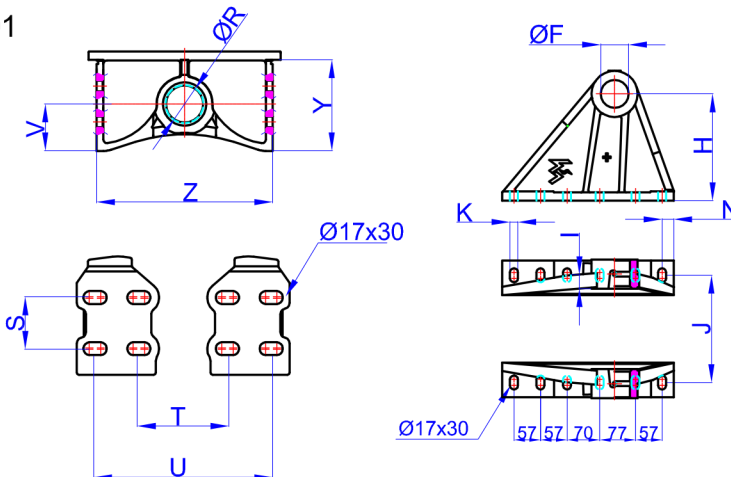
Drawing No : 43155444406-01-001



Bracket : 47000017-0001

GHLB : 47000121-0001

- R : 60,8 mm
- S : 70 mm
- T : 192 mm
- U : 312 mm
- V : 76 mm
- Y : 148 mm
- Z : 286 mm



- F : 65,5 mm
- H : 229 mm
- I : 28,5 mm
- J : 400 mm
- K : 17 mm
- N : 25 mm
- O : -- mm
- P : -- mm

* Bracket are optional

Weight : 9,5 Kg