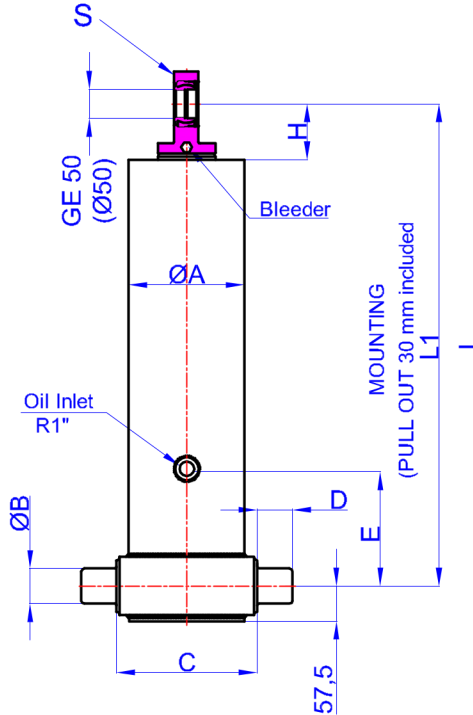


GHS 155 x 4 x 4600 C

Stock Code : 43155446003
Reference No : 01-001



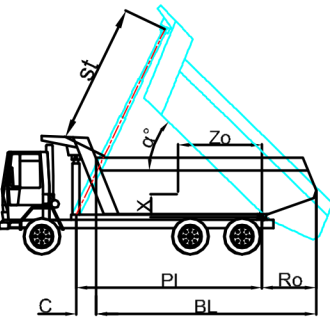
A : 175 mm
B : 60 mm
C : 215 mm
D : 60 mm
E : 350 mm
H : 95 mm
L : 1450 mm
*L1 : 1480 mm
S : 42 mm

* Inc 30 mm pull out :
tolerance +20 -0

Hard Chromed all stages

Working Pressure : 170 Bar
Max. Working Pressure : 190 Bar

All Cylinder Materials are St
52 Cold Drawn Tubes



STAGE	1	2	3	4	5	6	7	8	TOTAL
EFFECTIVE DIAMETER (mm)	Ø154,5	Ø135	Ø116	Ø98					
STROKE	1150	1150	1150	1150					4600
OIL DISPLACEMENT (L)	23	17,5	13	9,5					71
THRUST AT 170 BAR (TONS)	31	24	18	12					

BL (body length)	5800				5600				5400			
Ro (rear overhang)	200	500	800	200	500	800	200	500	800	200	500	800
α°	46	48	51	47	50	54	49	53	56			
Ycog (vert. pos. centre of gravity)												
PI (Pivot length)	35	39	46	36	41	49	37	43	53			
600	38	45	54	40	48	60	42	51	65			
900	43	51	65	45	56	69	48	60	73			
1200	4446	4400	4420	4386	4416	4500	4410	4505	4480			
st												

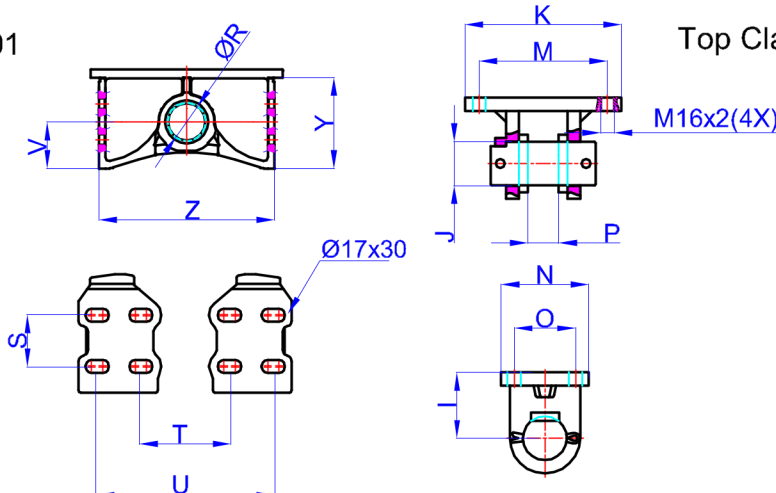
Weight : 184 Kg

Drawing No : 43155446003-02-001

Bracket : 47000017-0001

Top Clavis : 47000026-02-002

R : 60,8 mm
S : 70 mm
T : 192 mm
U : 312 mm
V : 76 mm
Y : 148 mm
Z : 286 mm



I : 85 mm
J : 50 mm
K : 216 mm
M : 184 mm
N : 125 mm
O : 95 mm
P : 39 mm

* Bracket are optional

Weight : 9,5 Kg