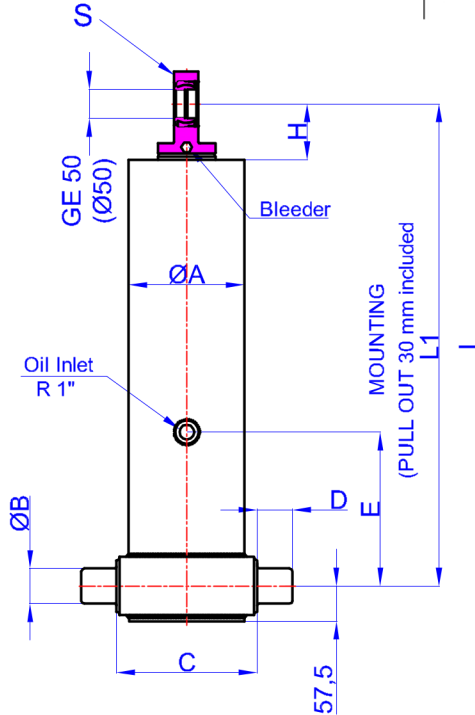


GHS 155 x 4 x 4960 C

Гр. София, ул. Челопешко шосе 10-12
 0886 441 442 / 0898 447 449
 www.hydraulicstore.eu



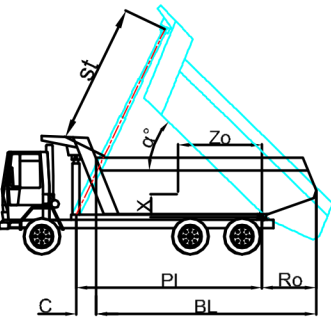
- A : 175 mm
- B : 60 mm
- C : 215 mm
- D : 60 mm
- E : 350 mm
- H : 95 mm
- L : 1550 mm
- *L1 : 1580 mm
- S : 42 mm

* Inc 30 mm pull out :
 tolerance +20 -0

Hard Chromed all stages

Working Pressure : 170 Bar
 Max. Working Pressure : 190 Bar

All Cylinder Materials are St
 52 Cold Drawn Tubes



STAGE	1	2	3	4	5	6	7	8	TOTAL
EFFECTIVE DIAMETER (mm)	Ø154,5	Ø135	Ø116	Ø98					
STROKE	1240	1240	1240	1240					4960
OIL DISPLACEMENT (L)	25	19	14	10					76,5
THRUST AT 170 BAR (TONS)	31	24	18	12					

BL (body length)	6300			6100			5900		
Ro (rear overhang)	200	500	800	200	500	800	200	500	800
α°	45	48	51	47	50	53	49	52	55
Ycog (vert. pos. centre of gravity)									
600	34	38	43	35	39	45	36	40	48
900	37	42	50	38	44	53	40	47	58
1200	46	48	58	42	51	63	45	54	66
st	4725	4800	4845	4778	4833	4858	4818	4853	4858

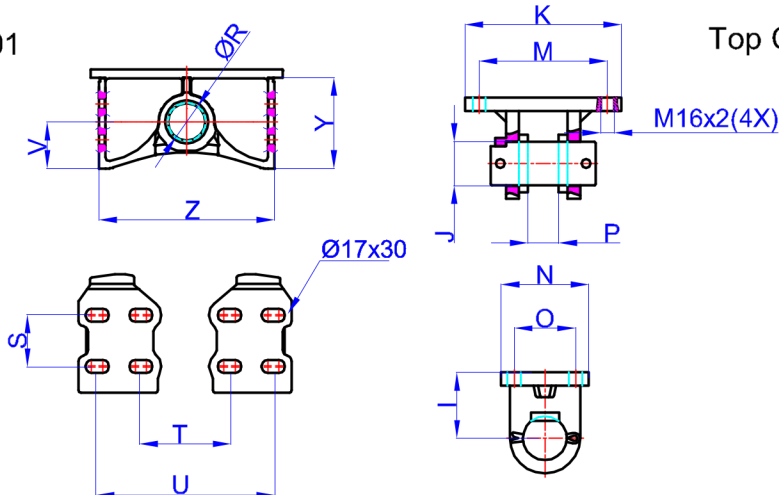
Weight : 196 Kg

Drawing No : 43155449603-02-001

Bracket : 47000024-0001

Top Clavis : 47000026-0001

- R : 60,8 mm
- S : 70 mm
- T : 195 mm
- U : 315 mm
- V : 80 mm
- Y : 152 mm
- Z : 368 mm



- I : 85 mm
- J : 50 mm
- K : 216 mm
- M : 184 mm
- N : 125 mm
- O : 95 mm
- P : 39 mm

* Bracket are optional

* Bracket are optional

Weight : 16,5 Kg