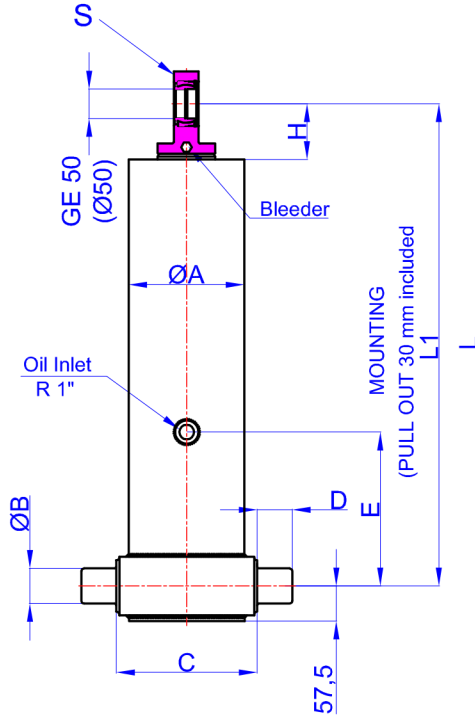


GHS 155 x 4 x 5140 C

Stock Code : 43155451403
Reference No : 01-001



- A : 175 mm
- B : 60 mm
- C : 215 mm
- D : 60 mm
- E : 350 mm
- H : 95 mm
- L : 1600 mm
- *L1 : 1630 mm
- S : 42 mm

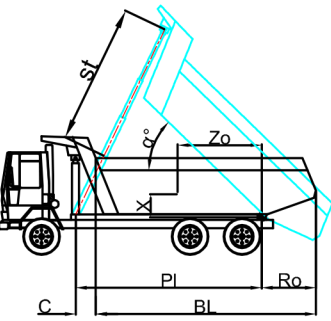
* Inc 30 mm pull out :
tolerance +20 -0

Hard Chromed all stages

Working Pressure : 170 Bar
Max. Working Pressure : 190 Bar

All Cylinder Materials are St
52 Cold Drawn Tubes

STAGE	1	2	3	4	5	6	7	8	TOTAL
EFFECTIVE DIAMETER (mm)	Ø154,5	Ø135	Ø116	Ø98					
STROKE	1285	1285	1285	1285					5140
OIL DISPLACEMENT (L)	25,5	19,5	14,5	10,5					78,5
THRUST AT 170 BAR (TONS)	31	24	18	12					



BL (body length)	6600			6400			6200		
Ro (rear overhang)	200	500	800	200	500	800	200	500	800
α°	45	47	50	46	49	52	48	51	54
Ycog (vert. pos. centre of gravity)									
600	33	37	42	34	38	43	35	39	46
900	36	40	47	37	42	50	39	44	53
1200	39	45	54	41	48	59	43	51	63
PI	4950	4935	5000	4906	4981	5026	4960	5015	5040

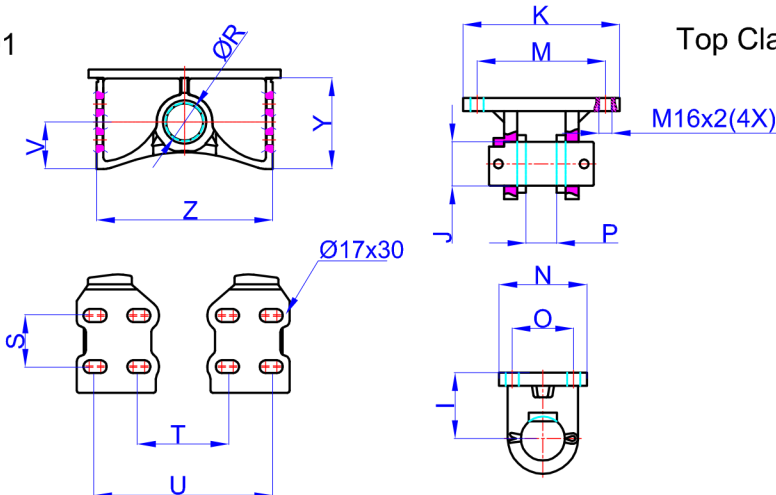
Weight : 196 Kg

Drawing No : 43155451403-02-001

Bracket : 47000017-0001

Top Clavis : 47000026-02-002

- R : 60,8 mm
- S : 70 mm
- T : 193 mm
- U : 313 mm
- V : 76 mm
- Y : 148 mm
- Z : 286 mm



- I : 85 mm
- J : 50 mm
- K : 216 mm
- M : 184 mm
- N : 125 mm
- O : 95 mm
- P : 39 mm

* Bracket are optional

Weight : 9,5 Kg