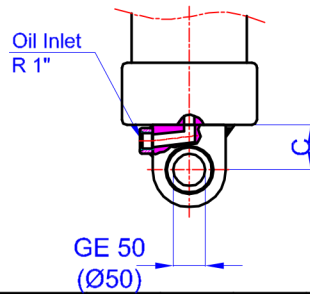
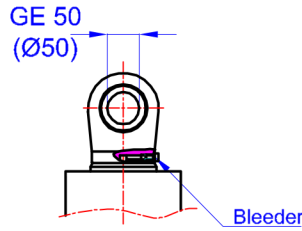
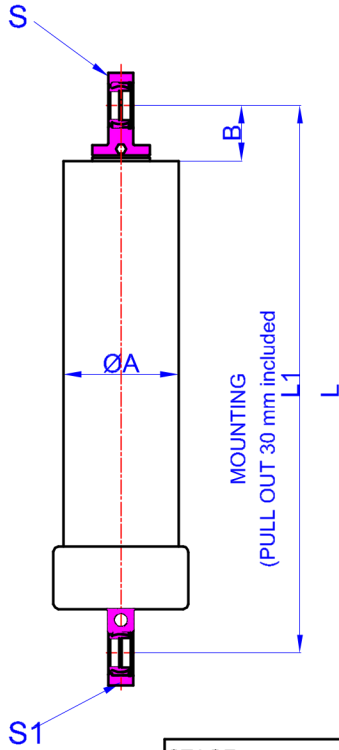


GHS 175 x 4 x 4600 B

Гр. София, ул. Челопешко шосе 10-12
 0886 441 442 / 0898 447 449
 www.hydraulicstore.eu



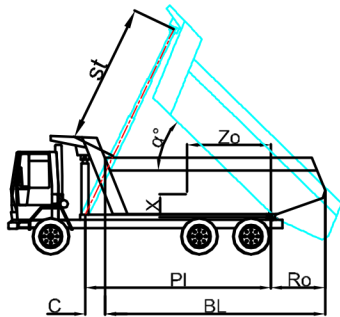
A	:	197	mm
B	:	95	mm
C	:	67,5	mm
E	:	---	mm
L	:	1555	mm
*L1	:	1585	mm
S	:	42	mm
S1	:	40	mm

* Inc 30 mm pull out :
 tolerance +20 -0
 Hard Chromed all stages
 Working Pressure : 170 Bar
 Max. Working Pressure : 190 Bar
 All Cylinder Materials are St
 52 Cold Drawn Tubes

STAGE	1	2	3	4	5	6	7	8	TOTAL
EFFECTIVE DIAMETER (mm)	Ø175	Ø154,5	Ø135	Ø116					
STROKE	1150	1150	1150	1150					4600
OIL DISPLACEMENT (L)	29	23	17	13					82
THRUST AT 170 BAR (TONS)	40	31	24	18					

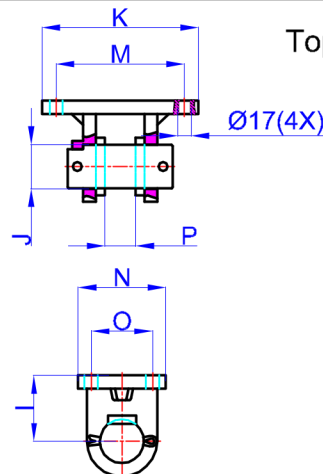
BL (body length)	5800			5600			5400		
Ro (rear overhang)	200	500	800	200	500	800	200	500	800
α°	46	48	51	47	50	54	49	53	56
Ycog (vert. pos. centre of gravity)									
600	51	58	68	53	60	72	55	63	78
900	56	65	80	59	70	86	61	74	90
1200	62	75	90	66	80	95	71	83	100
st	4446	4400	4420	4386	4416	4500	4410	4505	4480

BL (body length)
 Ro (rear overhang)
 α° (vert. pos. centre of gravity)
 Pl (Pivot length)
 $\alpha^\circ = \frac{st \times 60}{Pl}$



Weight : --- Kg

Drawing No :43175446002-01-001



Top Clavis : 47000026-0001

I	:	85	mm
J	:	50	mm
K	:	216	mm
M	:	184	mm
N	:	125	mm
O	:	95	mm
P	:	39	mm

* Bracket are optional