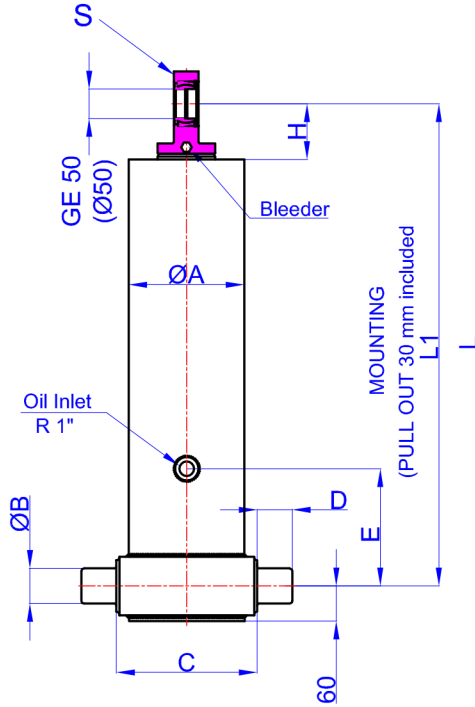


GHS 175 x 5 x 5750 C

Stock Code : 43175557503
Reference No : 01-001



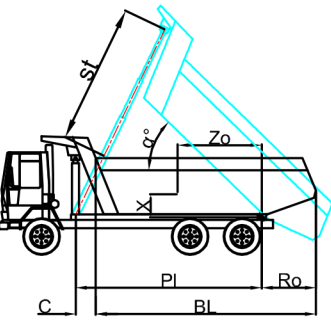
- A : 197 mm
- B : 60 mm
- C : 240 mm
- D : 60 mm
- E : 350 mm
- H : 95 mm
- L : 1447 mm
- *L1 : 1477 mm
- S : 42 mm

* Inc 30 mm pull out :
tolerance +20 -0

Hard Chromed all stages

Working Pressure : 170 Bar
Max. Working Pressure : 190 Bar

All Cylinder Materials are St
52 Cold Drawn Tubes



STAGE	1	2	3	4	5	6	7	8	TOTAL
EFFECTIVE DIAMETER (mm)	Ø175	Ø154,5	Ø135	Ø116	Ø98				
STROKE	1150	1150	1150	1150	1150				5750
OIL DISPLACEMENT (L)	29	23	17,5	13	9,5				99,5
THRUST AT 170 BAR (TONS)	40	31	24	18	12				

BL (body length)	7300			7100			6900		
Ro (rear overhang)	200	500	800	200	500	800	200	500	800
α°	45	47	49	46	49	51	47	50	53
Ycog (vert. pos. centre of gravity)									
600	35	38	42	36	39	44	37	40	46
900	38	42	48	39	43	50	40	46	53
1200	41	47	54	42	49	58	44	52	63
st	5475	5483	5471	5443	5553	5525	5405	5500	5565

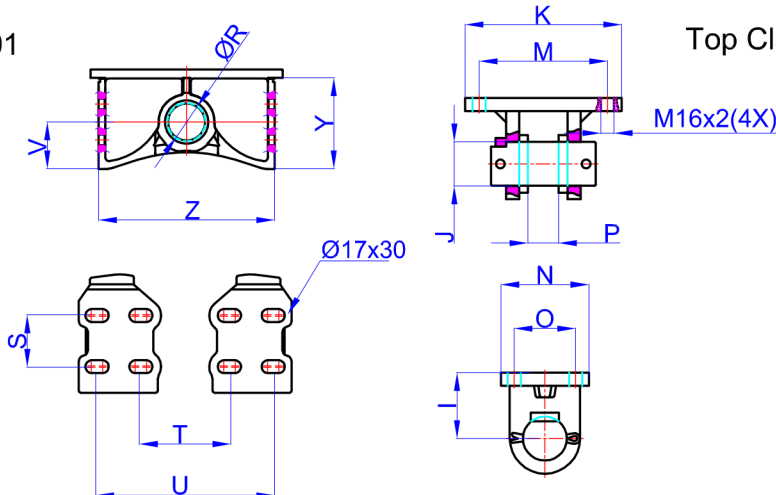
Weight : 244 Kg

Drawing No : 43175557503-02-001

Bracket : 47000024-0001

Top Clavis : 47000026-02-002

- R : 60,8 mm
- S : 70 mm
- T : 219 mm
- U : 339 mm
- V : 80 mm
- Y : 152 mm
- Z : 368 mm



- I : 85 mm
- J : 50 mm
- K : 216 mm
- M : 184 mm
- N : 125 mm
- O : 95 mm
- P : 39 mm

* Bracket are optional

Weight : 16,5 Kg