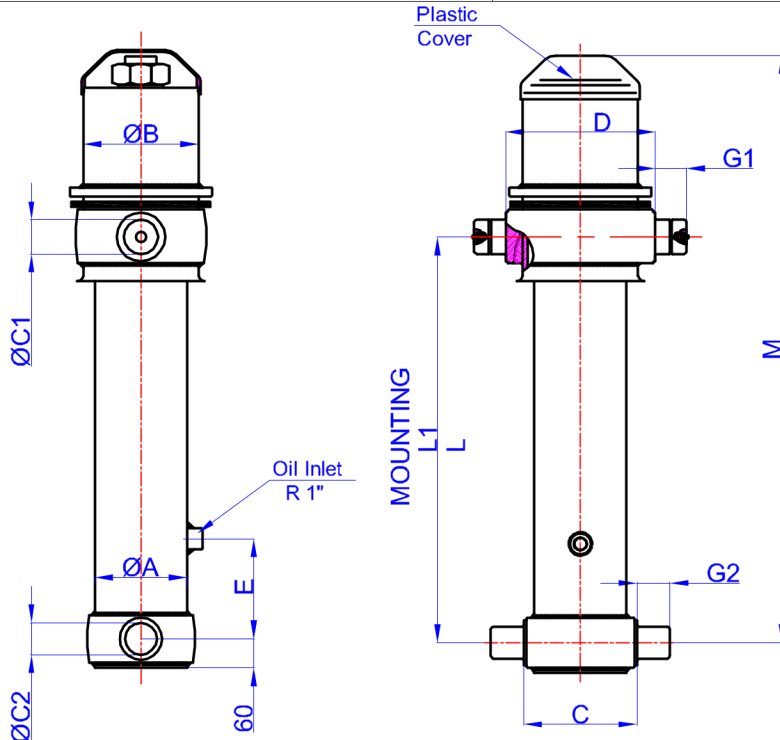


GHS 175 x 5 x 5750 H

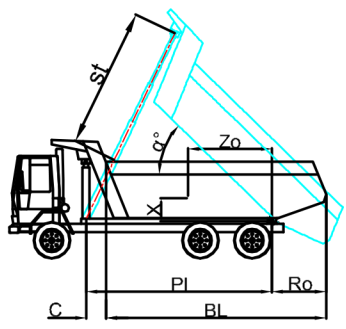
Stock Code : 43175557506
 Reference No : 06-001



- A : 197 mm
- B : 242 mm
- C : 240 mm
- C1 : 65 mm
- C2 : 60 mm
- D : 340 mm
- E : 190 mm
- G1 : 60 mm
- G2 : 60 mm
- L : 1050 mm
- *L1 : 1080 mm
- M : 1485 mm

* Inc 30 mm pull out :
 tolerance +20 -0
 Hard Chromed all stages
 Working Pressure : 170 Bar
 Max. Working Pressure : 190 Bar

STAGE	1	2	3	4	5	6	7	8	TOTAL
EFFECTIVE DIAMETER (mm)	Ø175	Ø154,5	Ø135	Ø116	Ø98				
STROKE	1150	1150	1150	1150	1150				5750
OIL DISPLACEMENT (L)	29	23	17,5	13	9,5				100
THRUST AT 170 BAR (TONS)	40	31	24	18	12				

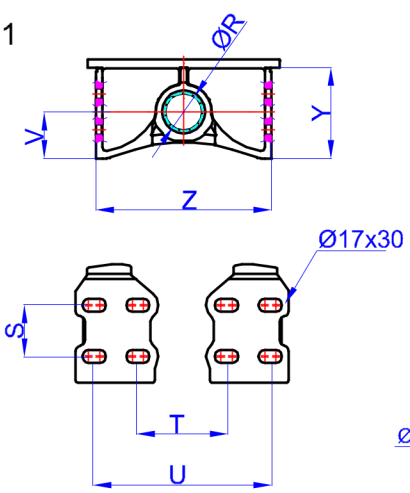


BL (body length)	7300			7100			6900		
Ro (rear overhang)	200	500	800	200	500	800	200	500	800
α°	45	47	49	46	49	51	47	50	53
Ycog (vert. pos. centre of gravity)									
600	35	38	42	36	39	44	37	40	46
900	38	42	48	39	43	50	40	46	53
1200	41	47	54	42	49	58	44	52	63
st	5475	5483	5471	5443	5553	5525	5405	5500	5565

Weight : --- Kg Drawing No : 43175557506-02-001

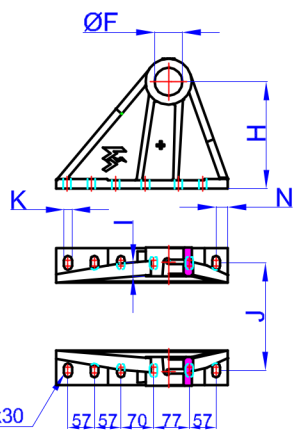
Bracket : 47000024-0001

- R : 60,8 mm
- S : 70 mm
- T : 220 mm
- U : 340 mm
- V : 80 mm
- Y : 152 mm
- Z : 368 mm



* Bracket are optional
 Weight : 16,5 Kg

GHLB : 47000121-0001



- F : 65,5 mm
- H : 229 mm
- I : 28,5 mm
- J : 400 mm
- K : 17 mm
- N : 25 mm
- O : -- mm
- P : -- mm

* Bracket are optional