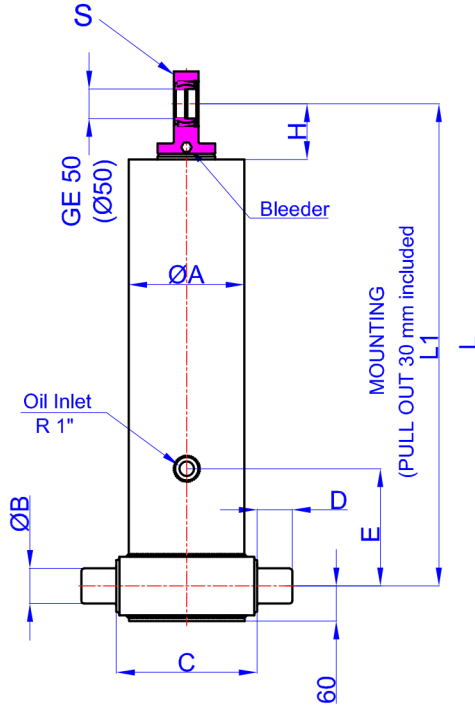


GHS 175 x 5 x 6200 C

 Stock Code : 43175562003
 Reference No : 01-001

 A : 197 mm
 B : 60 mm
 C : 240 mm
 D : 60 mm
 E : 350 mm
 H : 95 mm
 L : 1547 mm
 *L1 : 1577 mm
 S : 42 mm

 * Inc 30 mm pull out :
 tolerance +20 -0

Hard Chromed all stages

 Working Pressure : 170 Bar
 Max. Working Pressure : 190 Bar

 All Cylinder Materials are St
 52 Cold Drawn Tubes

STAGE	1	2	3	4	5	6	7	8	TOTAL
EFFECTIVE DIAMETER (mm)	Ø175	Ø154,5	Ø135	Ø116	Ø98				
STROKE	1240	1240	1240	1240	1240				6200
OIL DISPLACEMENT (L)	31,5	25	19	14	10,5				108,5
THRUST AT 170 BAR (TONS)	40	31	24	18	12				

BL (body length)

Ro (rear overhang)

Ycog (vert. pos. centre of gravity)

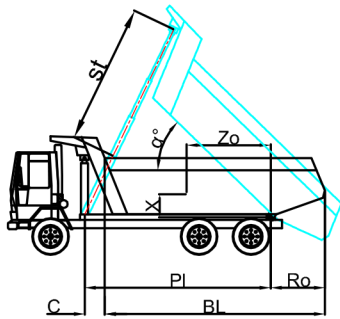
PI (Pivot length)

 $\alpha^\circ = \frac{st \times 60}{PI}$

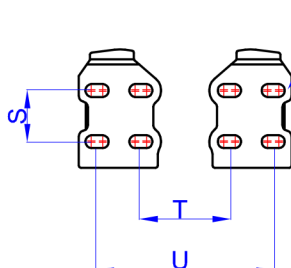
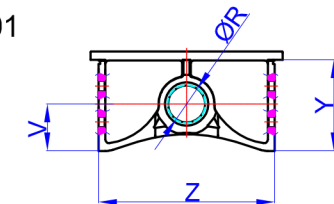
	8000			7800			7600		
BL	200	500	800	200	500	800	200	500	800
Ro	45	47	49	46	48	50	47	49	52
Ycog	33	36	39	34	37	40	35	38	42
600	36	39	43	37	40	45	37	41	47
900	38	42	48	39	44	51	41	46	54
1200	6000	6031	6043	5980	6000	6000	5953	5961	6066

Weight : 260 Kg

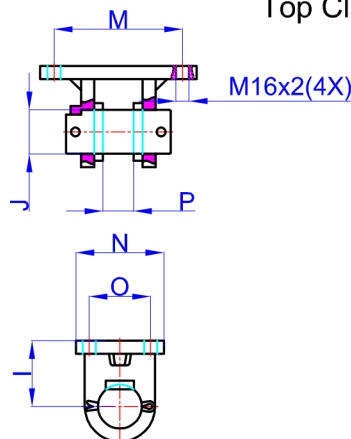
Drawing No : 43175562003-02-001



Bracket : 47000024-0001

 R : 60,8 mm
 S : 70 mm
 T : 218 mm
 U : 334 mm
 V : 80 mm
 Y : 152 mm
 Z : 368 mm


Top Clavis : 47000026-02-002


 I : 85 mm
 J : 50 mm
 K : 216 mm
 M : 184 mm
 N : 125 mm
 O : 95 mm
 P : 39 mm

* Bracket are optional

* Bracket are optional

Weight : 16,5 Kg