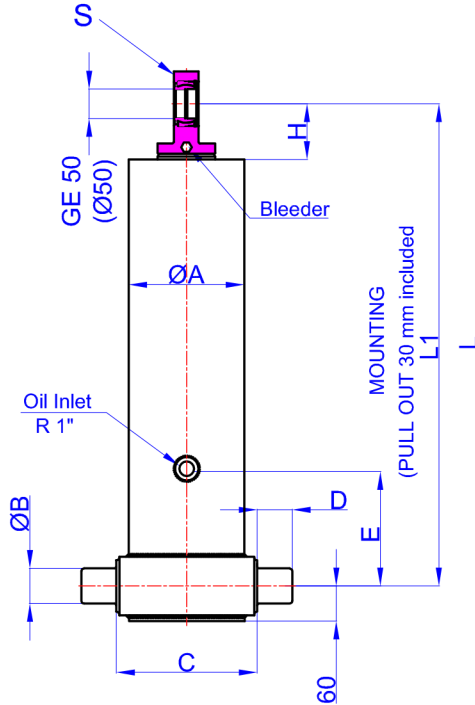


GHS 175 x 5 x 6425 C

Stock Code : 43175564253
Reference No : 01-001



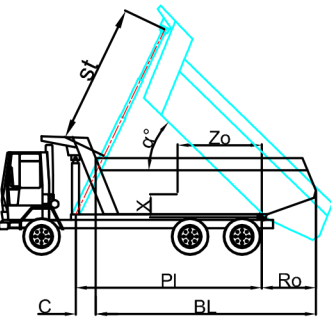
A : 197 mm
B : 60 mm
C : 240 mm
D : 60 mm
E : 350 mm
H : 95 mm
L : 1597 mm
*L1 : 1627 mm
S : 42 mm

* Inc 30 mm pull out :
tolerance +20 -0

Hard Chromed all stages

Working Pressure : 170 Bar
Max. Working Pressure : 190 Bar

All Cylinder Materials are St
52 Cold Drawn Tubes



STAGE	1	2	3	4	5	6	7	8	TOTAL
EFFECTIVE DIAMETER (mm)	Ø175	Ø154,5	Ø135	Ø116	Ø98				
STROKE	1285	1285	1285	1285	1285				6425
OIL DISPLACEMENT (L)	32,5	25,5	19,5	14,5	10,5				102,5
THRUST AT 170 BAR (TONS)	40	31	24	18	12				

BL (body length)	8200		8000			7800				
Ro (rear overhang)	200	500	800	200	500	800	200	500	800	
α°	45	47	49	46	48	50	47	49	52	
Ycog (vert. pos. centre of gravity)	600	34	37	40	35	37	41	35	38	42
PI (Pivot length)	900	36	39	44	37	40	46	38	42	48
	1200	39	43	49	40	45	51	41	47	54
α° = st x 60 / PI	st	6150	6188	6206	6133	6160	6166	6110	6125	6240

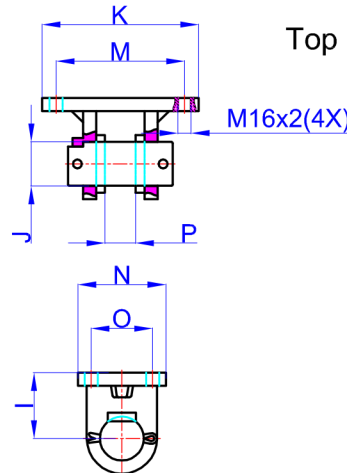
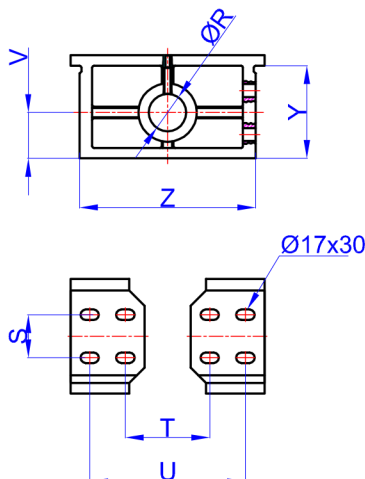
Weight : 268 Kg

Drawing No : 431755642503-02-001

Bracket : 47000105-0001

Top Clavis : 47000026-0001

R : 60,8 mm
S : 70 mm
T : 228 mm
U : 348 mm
V : 76 mm
Y : 150,5 mm
Z : 368 mm



I : 85 mm
J : 50 mm
K : 216 mm
M : 184 mm
N : 125 mm
O : 95 mm
P : 39 mm

* Bracket are optional

* Bracket are optional

Weight : 35 Kg