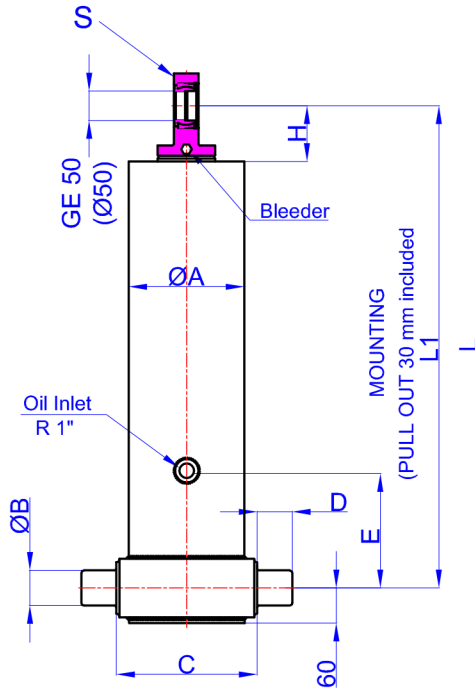


GHS 175 x 5 x 6875 C

Гр. София, ул. Челопешко шосе 10-12
0886 441 442 / 0898 447 449
www.hydraulicstore.eu



A	:	197	mm
B	:	60	mm
C	:	240	mm
D	:	60	mm
E	:	350	mm
H	:	95	mm
L	:	1697	mm
*L1	:	1727	mm
S	:	42	mm

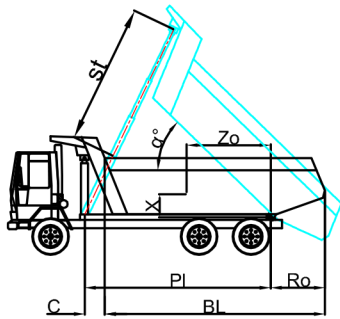
* Inc 30 mm pull out :
tolerance +20 -0

Hard Chromed all stages

Working Pressure : 170 Bar
Max. Working Pressure : 190 Bar

All Cylinder Materials are St
52 Cold Drawn Tubes

STAGE	1	2	3	4	5	6	7	8	TOTAL
EFFECTIVE DIAMETER (mm)	Ø175	Ø154,5	Ø135	Ø116	Ø98				
STROKE	1375	1375	1375	1375	1375				6875
OIL DISPLACEMENT (L)	35	27,5	21	15,5	11,5				120
THRUST AT 170 BAR (TONS)	40	31	24	18	12				



BL (body length)	8800			8600			8400		
Ro (rear overhang)	200	500	800	200	500	800	200	500	800
α°	45	46	48	46	48	50	47	49	51
Ycog (vert. pos. centre of gravity)									
600	33	36	39	34	37	40	35	37	41
900	36	38	42	36	39	43	37	40	45
1200	38	41	46	39	43	48	40	44	50
st	6600	6516	6560	6593	6640	6666	6580	6615	6630

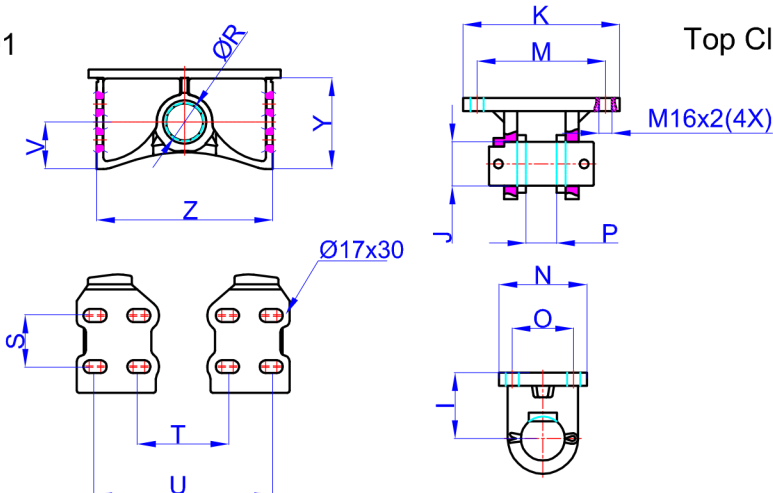
Weight : 283 Kg

Drawing No : 43175568753-02-001

Bracket : 47000024-0001

Top Clavis : 47000026-02-002

R	:	60,8	mm
S	:	70	mm
T	:	218	mm
U	:	334	mm
V	:	80	mm
Y	:	152	mm
Z	:	368	mm



I	:	85	mm
J	:	50	mm
K	:	216	mm
M	:	184	mm
N	:	125	mm
O	:	95	mm
P	:	39	mm

* Bracket are optional

* Bracket are optional
Weight : 16,5 Kg