

HYVA CYLINDER

714 07 675



type: UMB 191-7-2360-K278-60-3/4"-HC

tipping weight: 14-32 ton

page # 1 / 2

Stage diameters	front view cylinder		A	245
191			ØC	215
169		G ¹	583	
149		I	305	
129		K ¹	278	
110		M ¹	114	
91		ØP	100	
72		ØQ	65	
		S	323	
		ØW	60	
		X	45	

¹including 20 mm pull-out [tol. -5; +30 mm]

²cylinder is delivered including oil inlet swivel adapter and cup

specifications

total stroke ¹	2360 mm
dry weight cylinder only	118 kg
total volume	37.0 L
working volume	34.3 L
maximum pressure	220 bar
maximum pump flow	61 l/min
maximum allowable thrust first stage ³	25.0 ton
oil inlet	3/4" BSP

technical notes

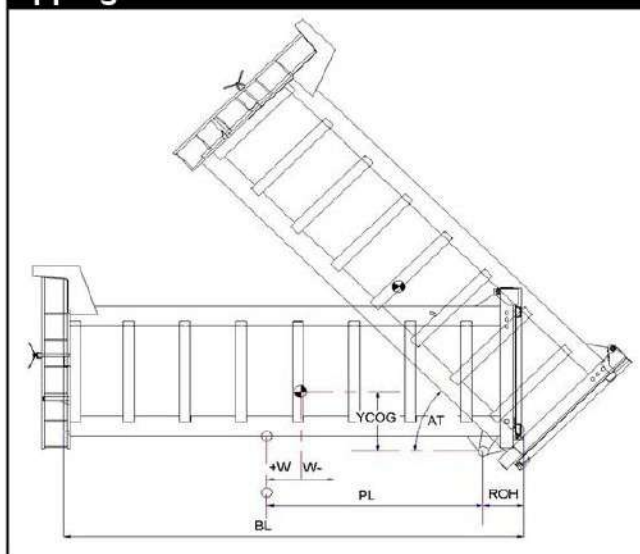
This cylinder is a lifting device only and may not be used as a structural member or be subjected to side load. Sideload and/or poor alignment might result in cylinder leakage. Hyva therefore strongly recommends the use of a cradle, even in instances where the cylinder only tips to the rear or to the side. The cylinder is painted black RAL9005.

For suitable hydraulic oils, please refer to data sheet OIL-0011. For details of available brackets and cradles, please refer data sheet 015BRA06.

Detailed calculations can be made using the HYVA Tipper Program, freely available from tipper.hyva.com.

³The cylinder thrust on the first stage (from the HYVA Tipper Program) must not exceed the maximum allowable (see specifications above).

tipping view



tipping weight

PL	3080	mm	2720				
YCOG	700	mm	700				
ROH	700	mm	700				
BL	7560	6870	6300	mm	6840	6220	5700
CYL w.r.t. COG (W)	0	340	630	mm	0	310	570
				Tipping weight for full stroke of 46°			
				Tipping weight for full stroke of 52°			
Tipping weight	14	16	18	ton	15	18	21
				Tipping weight for second last stage, up to 39°			
				Tipping weight for 2nd last stage, up to 45°			
Tipping weight	19	25	29	ton	23	28	32

Този продукт се предлага от:



Гр. София, ул. Челопешко шосе 10-12
0886 441 442 / 0898 447 449
www.hydraulicstore.eu

HYDRAULIC PARTS & EQUIPMENT

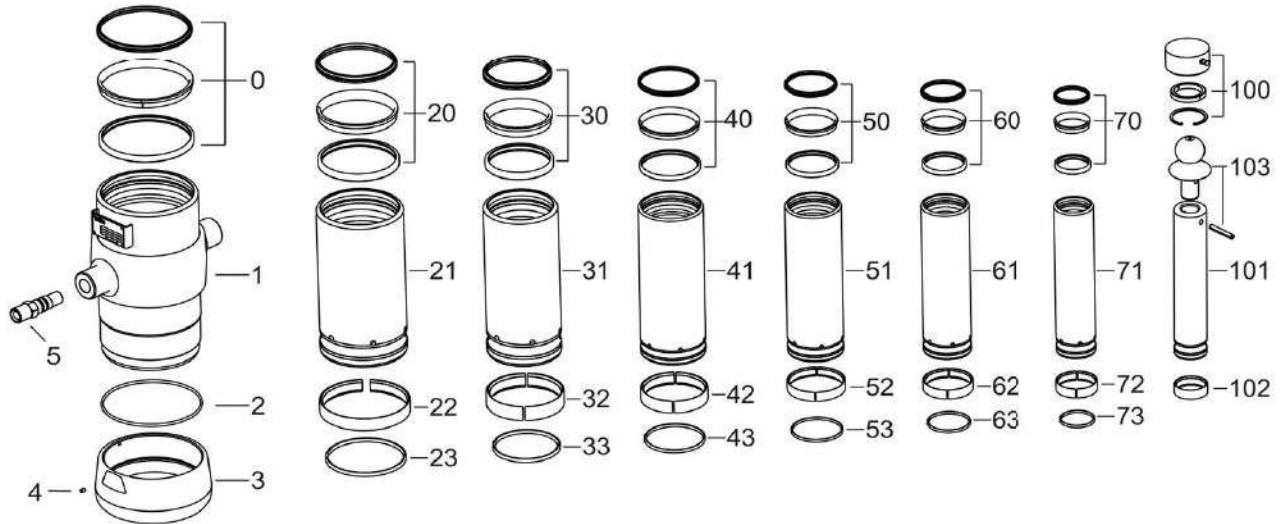
HYVA CYLINDER

714 07 675

type

UMB 191-7-2360-K278-60-3/4"-HC

page # 2 / 2



Spare part list

Pos	Part no.	Description	Qty.
1	73508400	BASE 214-0438-N0164	1
2	01226840	O-RING 208 X 4 70 SHORE	1
3	73101060	THREADED BOTTOM UM 214	1
4	01792571	LOCKING SCREW M6X12 INT. HEX. DIN 916	1
5	73103002	OIL INLET ADAPTOR UM 3/4"OT+O-RING	1
21	73607401	STAGE 191-0438-HC	1
22	71807191 K	SLIDER FL 191	1
23	71813191 K	LIFTRING FL 191x5	1
31	73606401	STAGE 169-0438-HC	1
32	71807169 K	SLIDER FL 169	1
33	71813169 K	LIFTRING FL 169x5	1
41	73605401	STAGE 149-0438-HC	1
42	71807149 K	SLIDER FL 149	1
43	71812149 K	LIFTRING FL 149/HP 150	1
51	73604401	STAGE 129-0438-HC	1
52	71807129 K	SLIDER FL 129/GF 129 (2 X 1/2)	1
53	71812129 K	LIFTRING FL 129/HP 129	1

Spare part list

Pos	Part no.	Description	Qty.
61	73603401	STAGE 110-0438-HC	1
62	71807110 K	SLIDER FL 110/GF 110 (2 X 1/2)	1
63	71812110 K	LIFTRING FL 110	1
71	73602401	STAGE 091-0438-HC	1
72	71807091 K	SLIDER FL 091 (2 X 1/2)	1
73	71812091 K	LIFTRING FL 091	1
100	01745102	RETAINER KIT UMB D.65	1
101	73401405	PISTON F 072-0438-HC	1
102	71807072 K	SLIDER FL 072 (2 X 1/2)	1
103	73102040	SPHERE FLANGED UMB 65	1
	01745806	SPRING PIN 10X70 ISO 8752 HEAVY DUTY	1

Seal kit complete

Part no.	Description
719 04 770K	Complete packset: Consists of all packsets with packset grease and o-ring.

Този продукт се предлага от:



HYDRAULIC PARTS & EQUIPMENT

Гр. София, ул. Челопешко шосе 10-12

0886 441 442 / 0898 447 449

www.hydraulicstore.eu